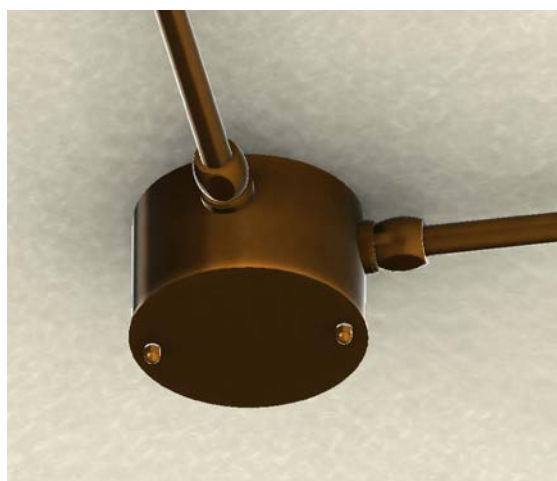


SQDER90/O

I QUADRI

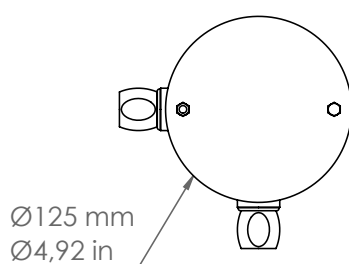
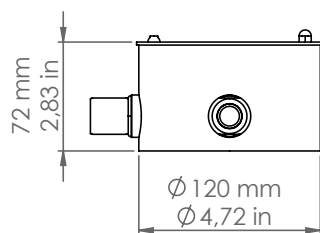


Art. SQDER90/O

Descrizione: / Description:

Scatola di connessione in ottone anticato a due uscite a 90°, comprensiva di raccordi CIL16.

/ Connection box in aged brass, with two 90° outputs, CIL16 connection included.



SQDER90/O

DATI TECNICI: / TECHNICAL DATA:

CE IP20

MATERIALE:
/ MATERIAL:

Ottone
Brass

VOLUME [M³]:

0,01

PESO LORDO [Kg]:
/ GROSS WEIGHT [Kg]:

1,58

FINITURA:
FINISH:

Ottone anticato
Aged brass

É necessario ricevere il disegno grafico quotato.
/ It's necessary to receive the listed graphic drawing.