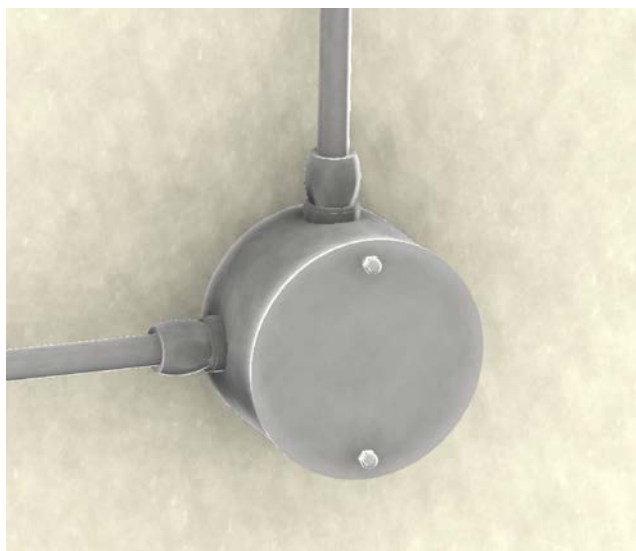


## I QUADRI

### SQDER90/NS



Art. SQDER90/NS

*Descrizione: / Description:*

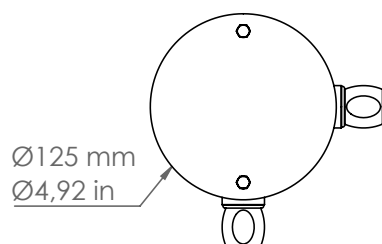
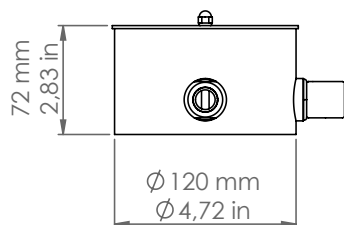
*Scatola di connessione in nichel satinato a due uscite a 90° comprensiva di raccordi CIL.16.*

*/ Connection box in satin nickel, with two 90° outputs, CIL.16 connection included.*

## SQDER90/NS

DATI TECNICI: / TECHNICAL DATA:

CE  IP20 



MATERIALE:

/ MATERIAL:

Nichel

Nickel

VOLUME [M³]:

0,01

PESO LORDO [Kg]:

/ GROSS WEIGHT [Kg]:

1,58

FINITURA:

/ FINISH:

Nichel satinato

Satin nickel

É necessario ricevere il disegno grafico quotato.

/ It's necessary to receive the listed graphic drawing.